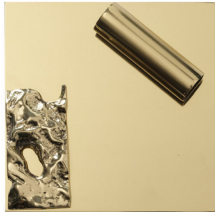


GASPARE ASARO

MILAN NEW YORK

METAL

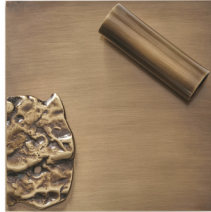
Our patinas are applied on brass or copper and are available in a semi-gloss or matte finish. Due to their artisanal nature, minor variations and imperfections may occur contributing to the uniqueness of each piece. Polished brass and satin brass may be left unlacquered to promote a natural aging. Client supplied finishes can be matched on request.



POLISHED BRASS
STANDARD



SATIN BRASS
STANDARD



BRONZO OTTONE
PREMIUM



BRONZO NUVOLATO
PREMIUM



POLISHED COPPER
PREMIUM



POLISHED NICKEL
PREMIUM



SATIN NICKEL
PREMIUM



PELTRO
PREMIUM



BRUNITO NERO
PREMIUM



COPPER MATTE
PREMIUM

COLOR

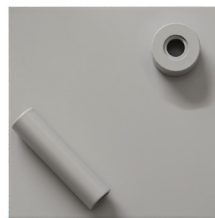
All products are available in eight signature colors and can be coated in a semi-gloss or matte finish. RAL colors can be closely matched on request.



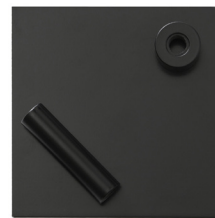
CLOUD WHITE



SAND WHITE



STONE GREY



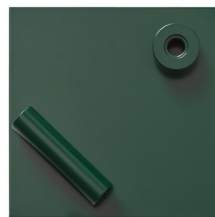
NIGHT BLACK



POWDER PINK



LERICI ACQUA



ALPINE GREEN



MEDITERRANEAN BLUE



GASPARE ASARO

MILAN NEW YORK

GLASS

Our glasses are handmade by a collective of artisans throughout Italy; each with their distinctive techniques passed down from generation to generation.

CARVED GLASS

Hand carved and worked by hand one at the time in Milan.



CLEAR WHITE



ROSA



AMBRA



VERDE



BLUE

MURANO GLASS

Handblown on the small island of Murano in the Venetian lagoon.



MURANO BUBBLE



MURANO FROSTED



SFERA



OPALINE

MIRRORED GLASS

Precisely cut and curved in a variety of shapes in Milan.



AMBRA GRIGIO ACQUAMARINA VERDE ROSA BRONZO BLUE

ADDITIONAL DIFFUSER OPTIONS

Alabaster and Crystal sourced from the Tuscan town of Volterra.



ALABASTER



TUSCAN CRYSTAL

